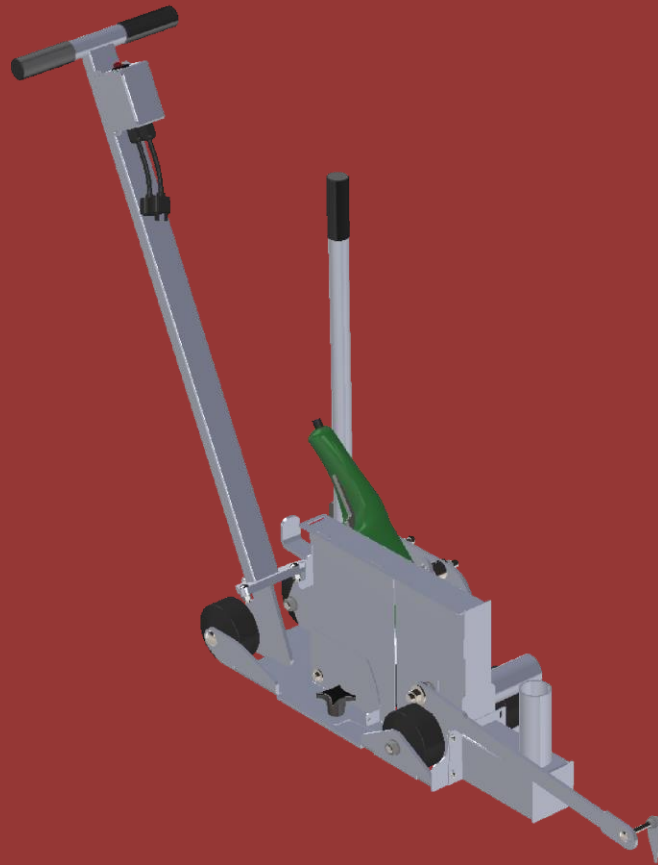
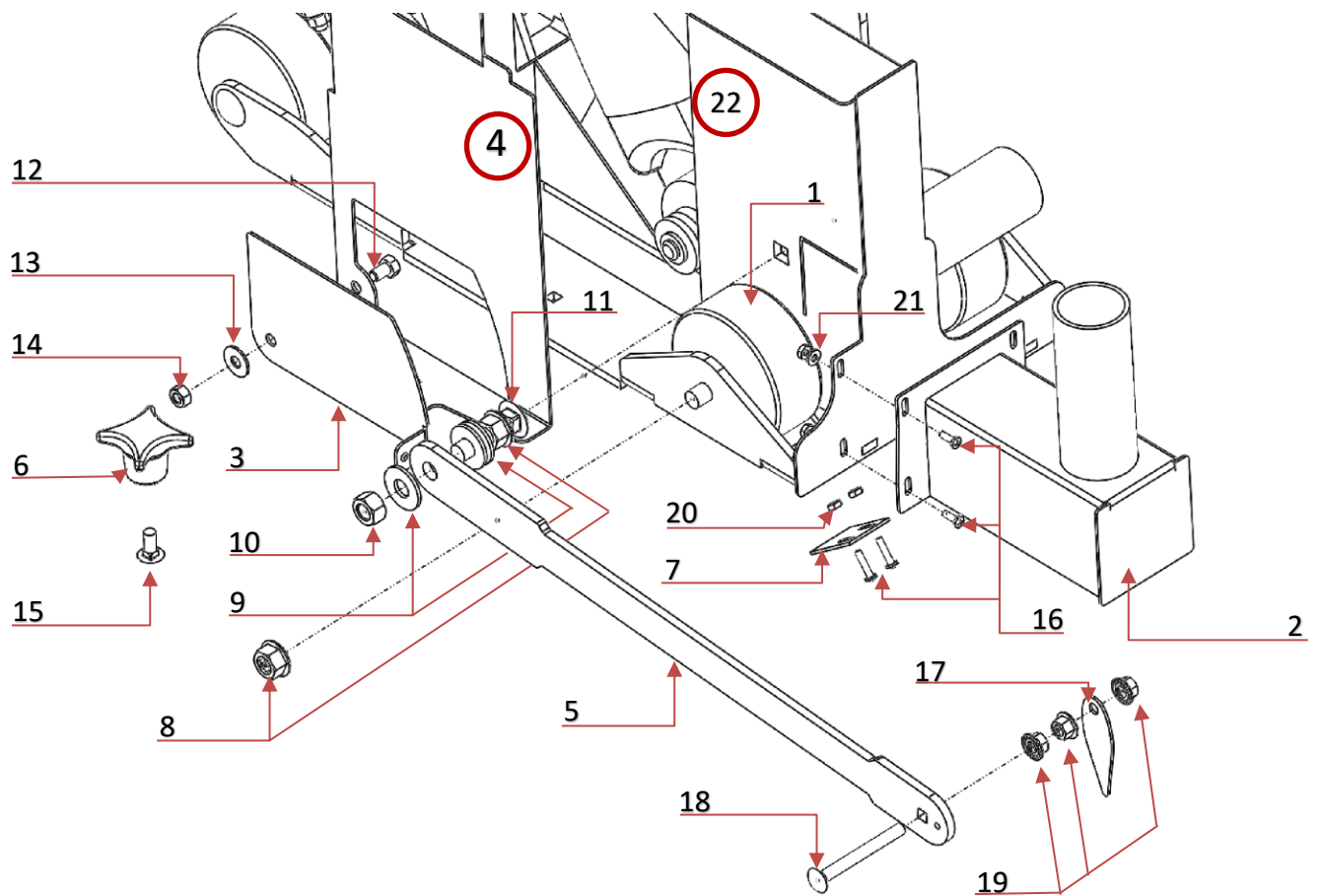


2018

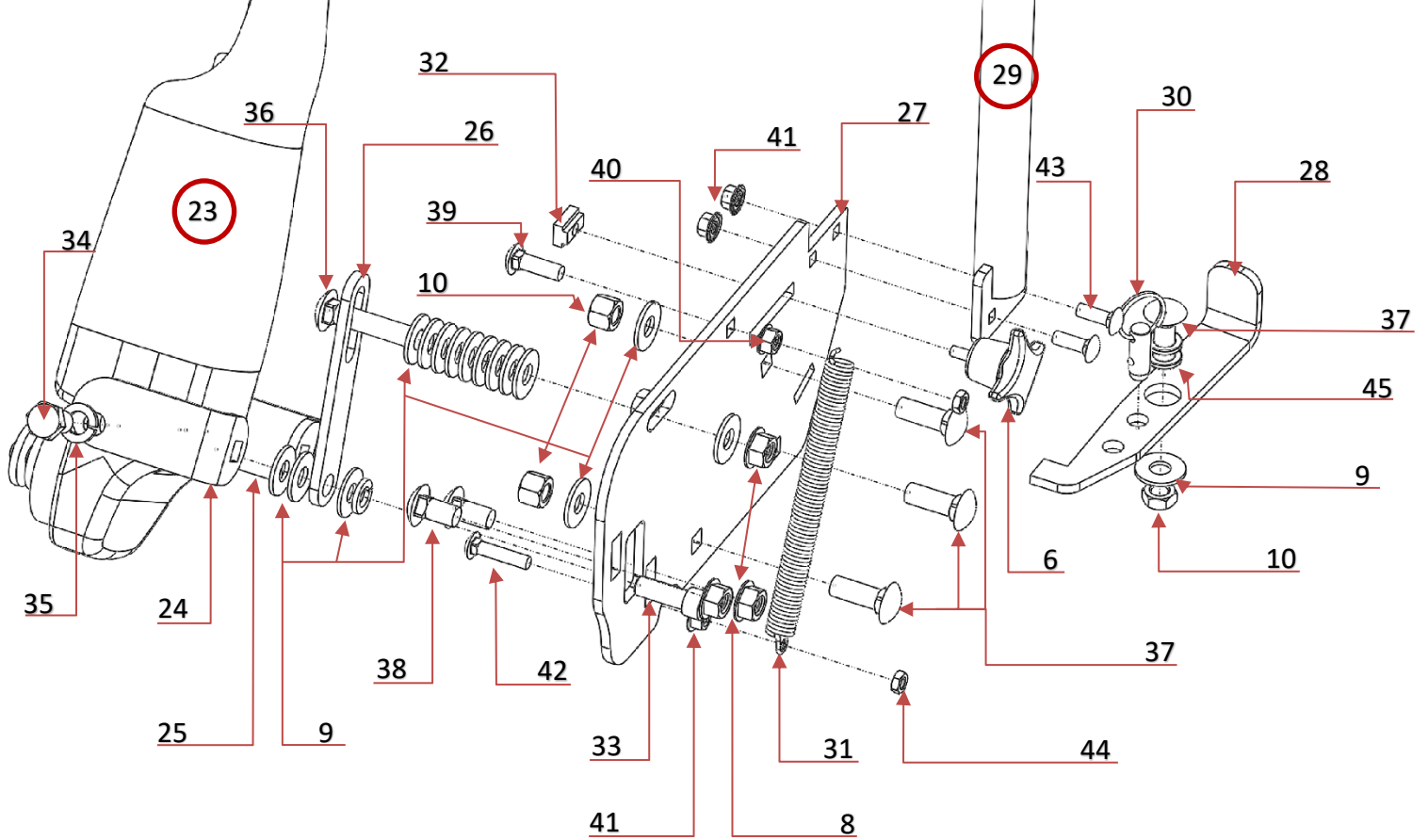


GCT – 10 Parts Diagram

GCT - 10
OBHC INC
(440) 236-5112
SALES@OBHCINC.COM

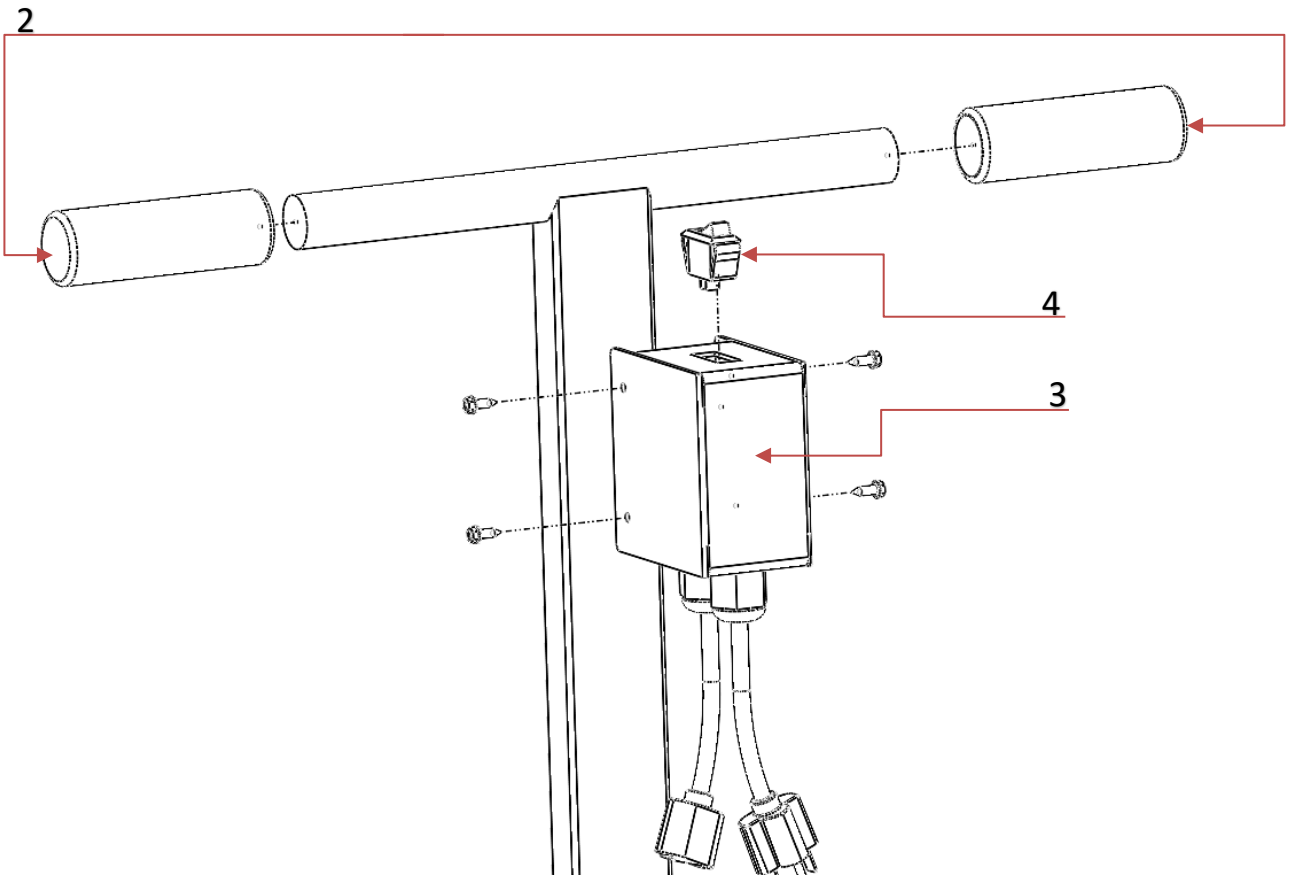


Part number	Description
10 - 1	Wheel
10 - 2	DB-10 (optional front dust box)
10 - 3	Blade guard sight door
10 - 4	Blade guard
10 - 5	Pointer arm
10 - 6	Knob
10 - 7	Dust deflector
10 - 8	Serrated flange nut
10 - 9	Washer
10 - 10	Nylon locking nut
10 - 11	Carriage bolt
10 - 12	Hex head bolt
10 - 13	Washer
10 - 14	Nylon locking nut
10 - 15	Carriage bolt
10 - 16	Machine screw
10 - 17	Pointer
10 - 18	Carriage bolt
10 - 19	Serrated flange nut
10 - 20	Machine nylon locking nut
10 - 21	Washer
10 - 22	Saw base



Part number	Description
10 – 23	Angle Grinder
10 – 24	Top mounting bracket
10 – 25	Bottom mounting bracket
10 – 26	Center mounting bracket
10 – 27	Pivoting bracket mounting plate
10 – 28	Foot lock
10 – 29	Lift and lower handle
10 – 30	Locking pin
10 – 31	Spring
10 – 32	T-bolt
10 – 33	Socket head bolt
10 – 34	Hex head bolt
10 – 35	Split lock washer
10 – 36	Carriage bolt
10 – 37	Carriage bolt
10 – 38	Carriage bolt
10 – 39	Carriage bolt
10 – 40	Serrated flange nut
10 – 41	Serrated flange nut
10 – 42	Carriage bolt
10 – 43	Carriage bolt
10 – 44	Nylon locking nut

Handle Assembly



Part number	Description
H-1	Handle Assembly
H-2	Handle Grip
H-3	Electrical box
H-4	Switch