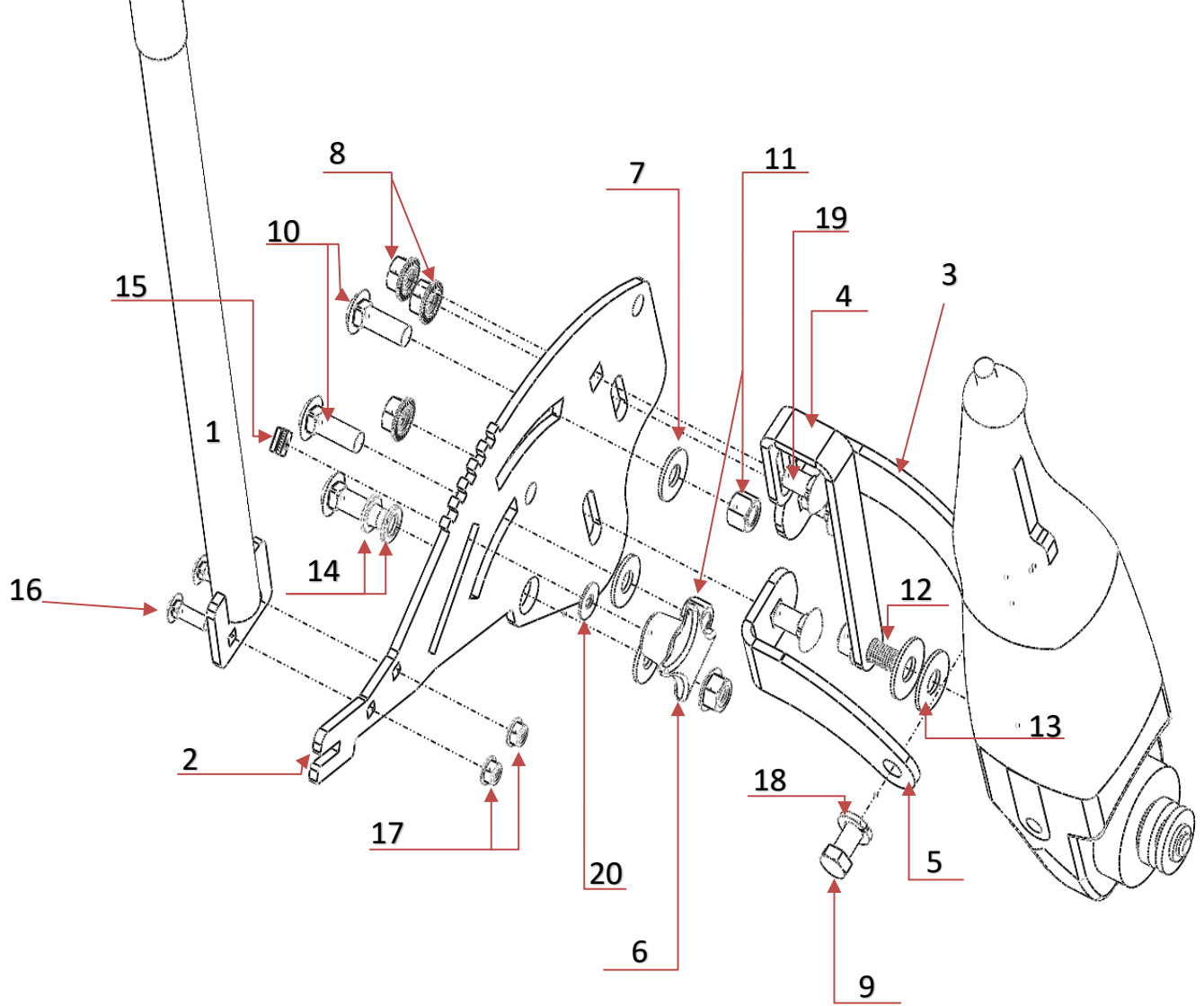
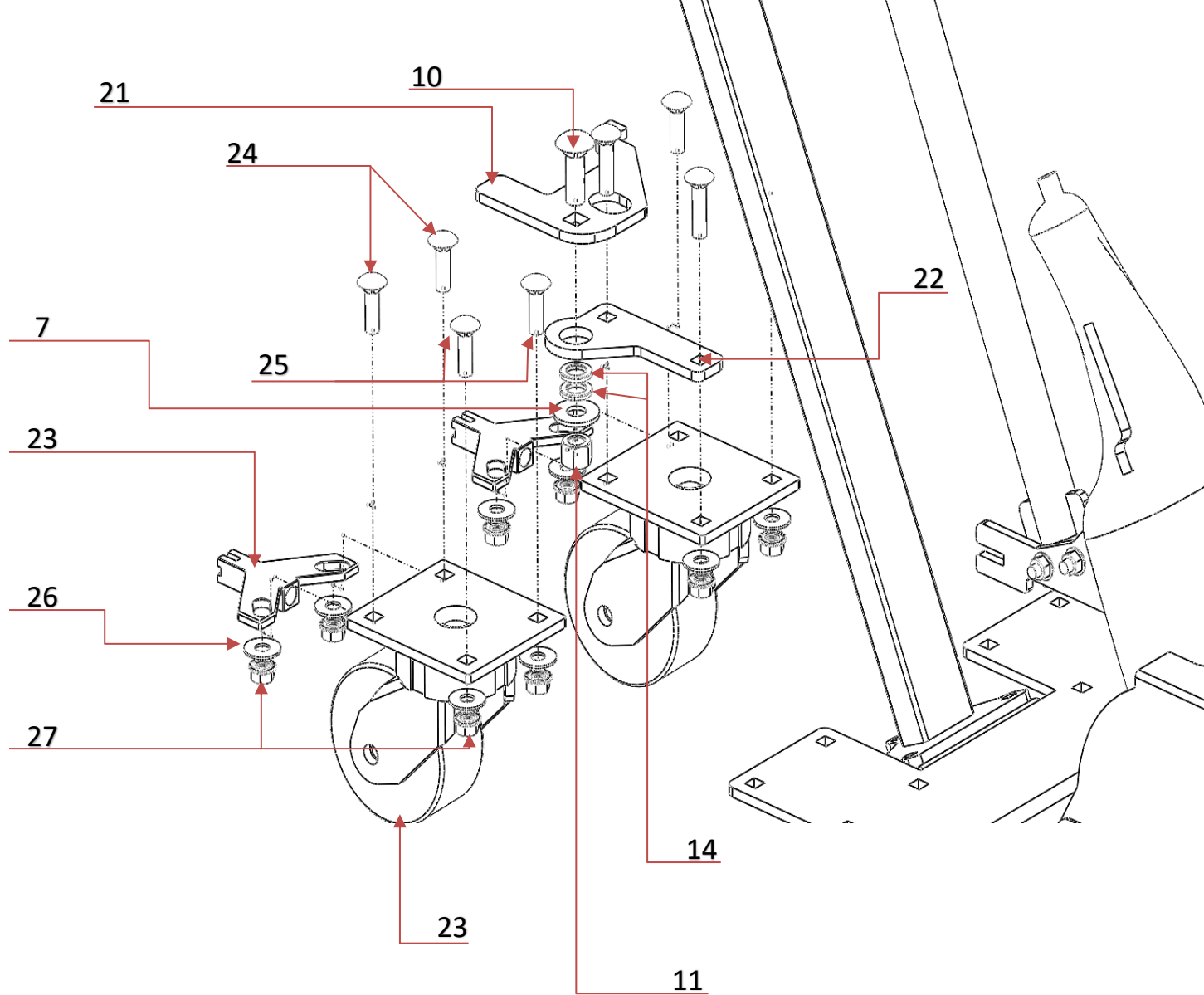


GCT-9 Parts Diagram

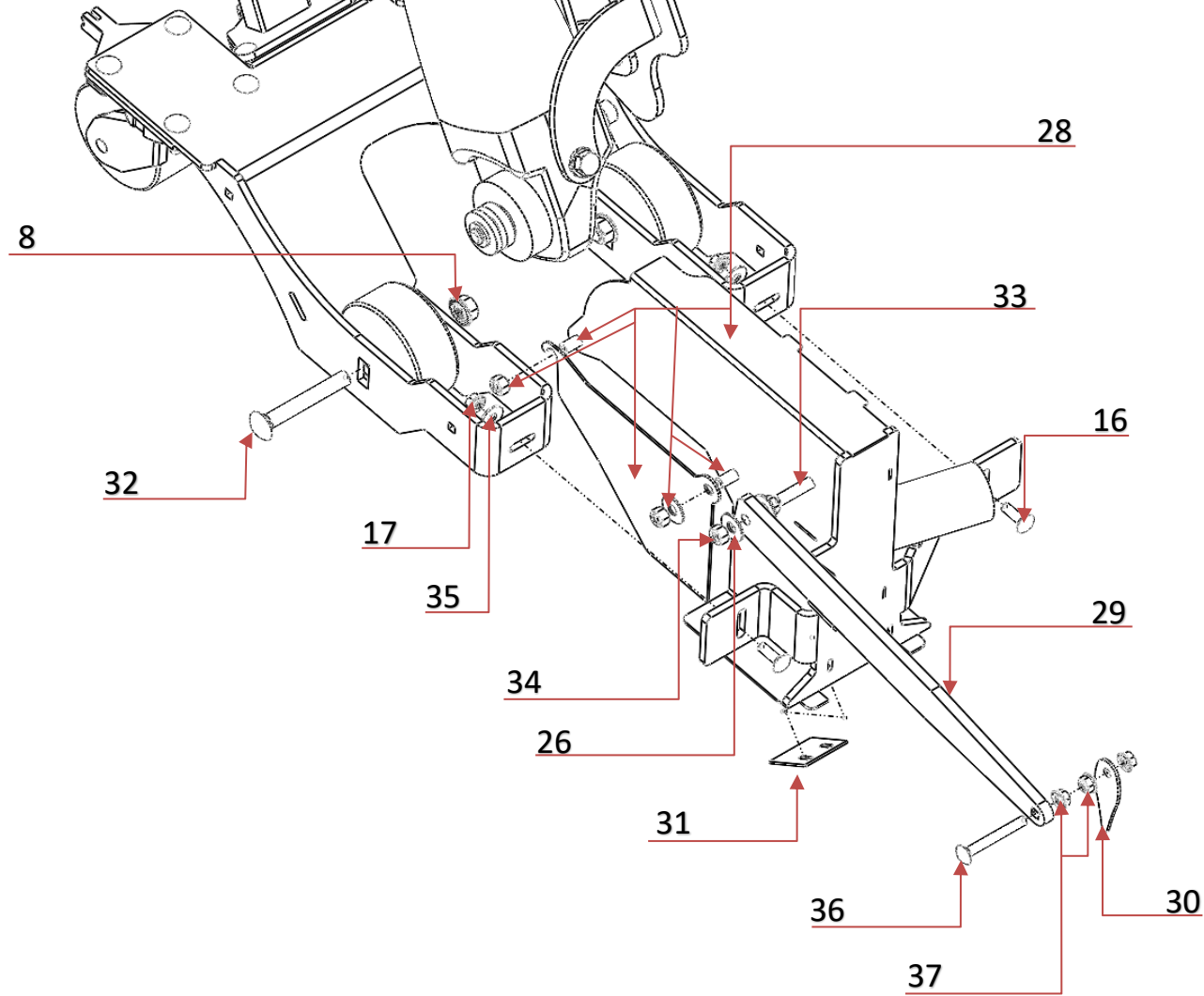
GCT - 9
OBHC INC
(440) 236-5112
SALES@OBHCINC.COM



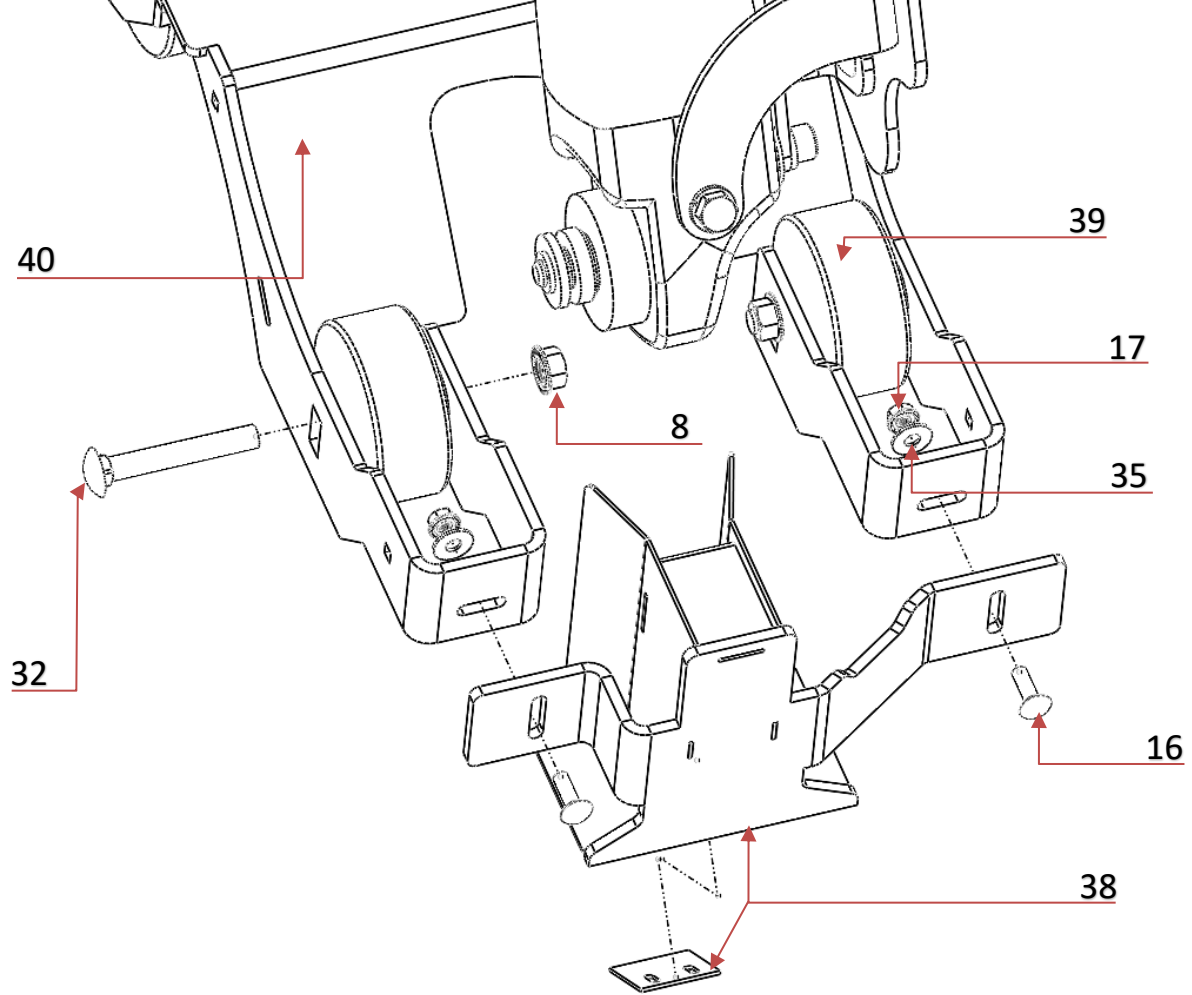
Part number	Description
9-1	Lift Handle with grip
9-2	Pivot plate
9-3	Front mounting bracket
9-4	Middle alignment bracket
9-5	Rear mounting bracket
9-6	Knob
9-7	Washer
9-8	Serrated flange nut
9-9	Bolt
9-10	Carriage bolt
9-11	Nylon lock nut
9-12	Bolt
9-13	Washer
9-14	Greased washer
9-15	T-bolt
9-16	Carriage Bolt
9-17	Serrated flange nut
9-18	Lock washer
9-19	Carriage bolt
9-20	Washer



Part Number	Description
9-21	Foot lock
9-22	Foot lock mounting bracket
9-23	Swiveling Caster Assembly
9-24	Carriage bolt
9-25	Carriage bolt
9-26	Washer
9-27	Serrated flange nut

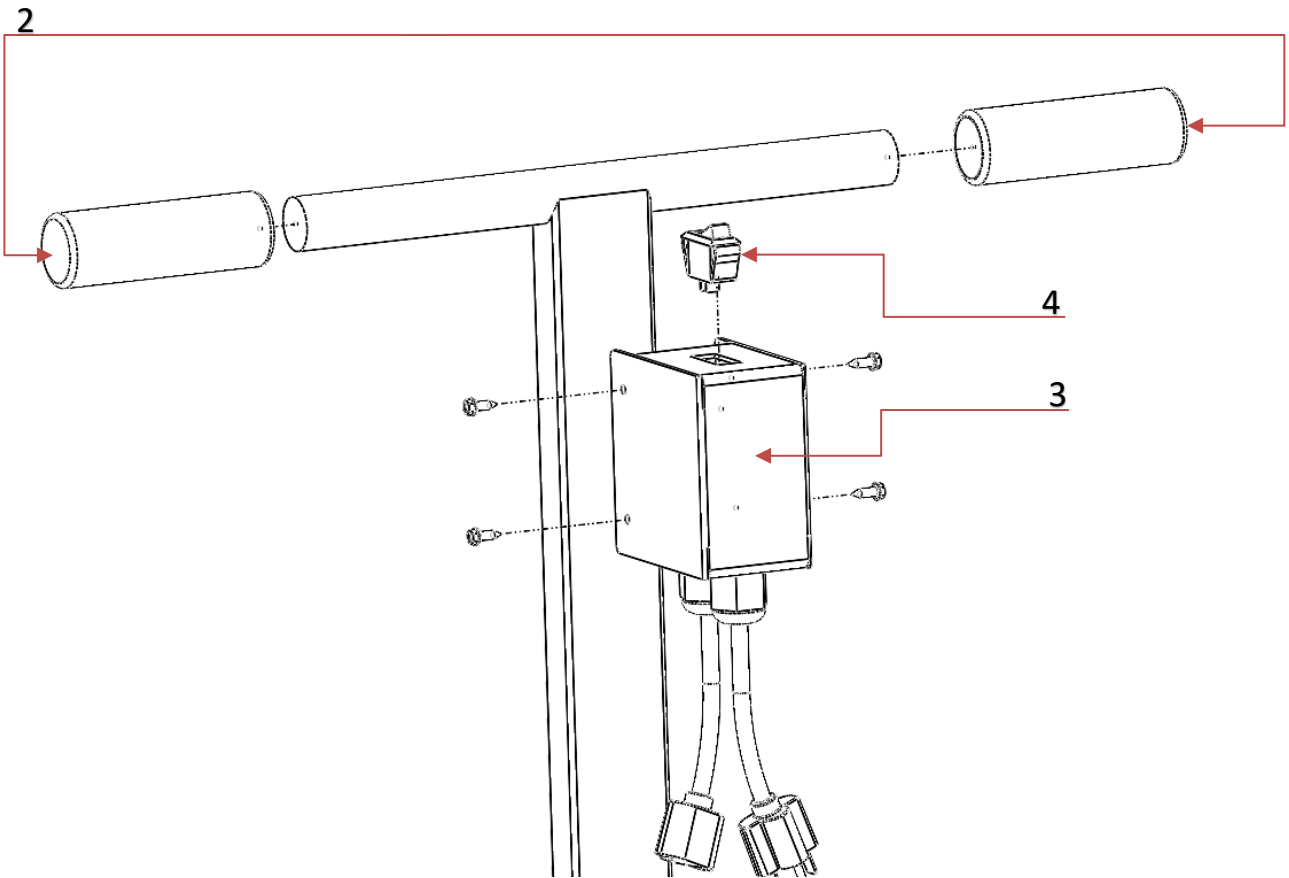


Part number	Description
9-28	Straight joint dust box assembly
9-29	Pointer arm assembly
9-30	Pointer
9-31	Dust deflector (included in 9-28)
9-32	Carriage bolt
9-33	Carriage bolt
9-34	Nylon lock nut
9-35	Washer
9-36	Carriage bolt
9-37	Serrated flange nut



Part Number	Description
38	Crack chasing guard assembly
39	Wheel
40	Main Frame
41	Grinder

Handle Assembly



Part number	Description
H-1	Handle Assembly
H-2	Handle Grip
H-3	Electrical box
H-4	Switch