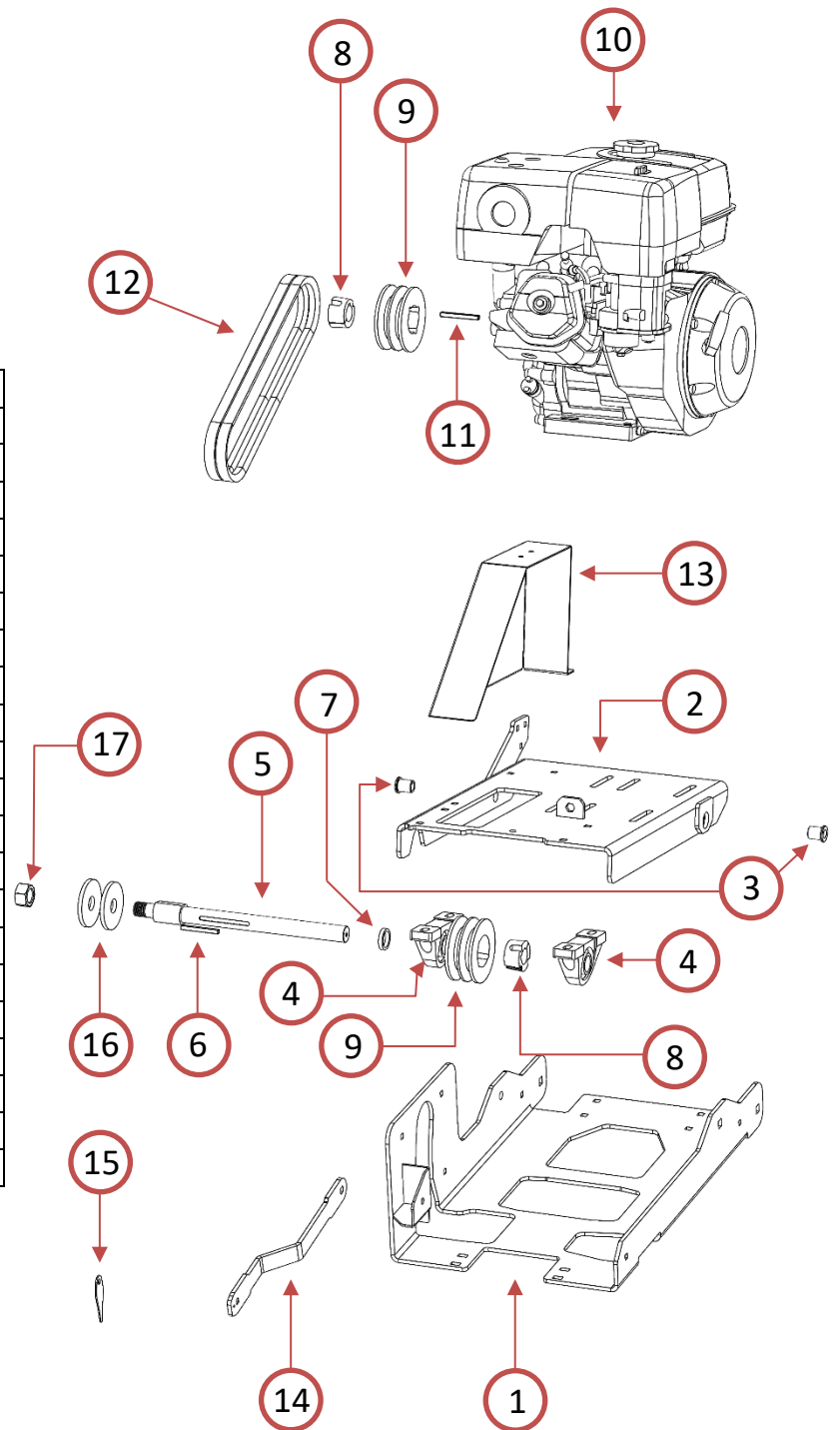
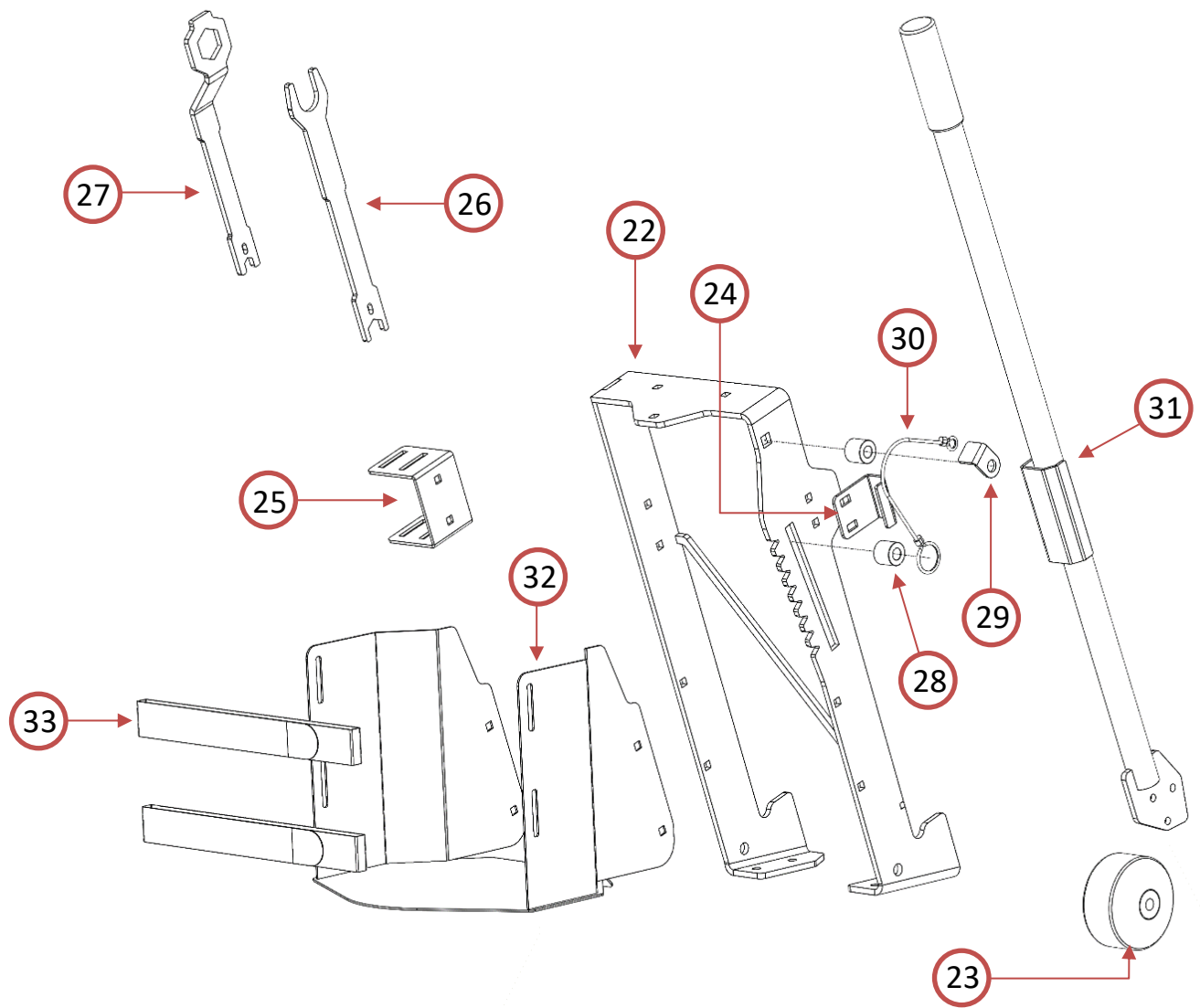
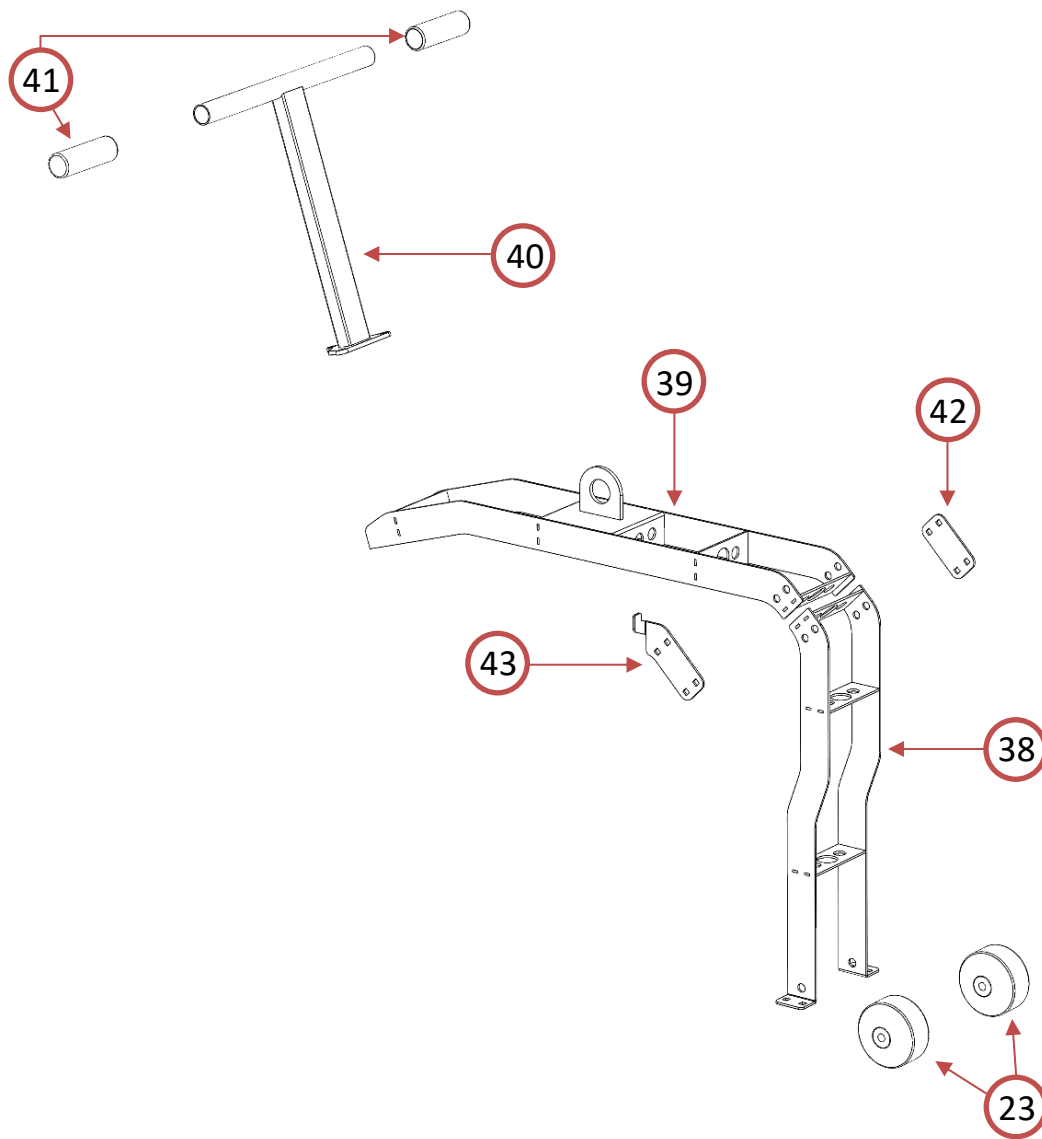


Part #	Description
X - 1	Saw Base
X - 2	Motor Mounting Plate
X - 3	Motor Plate Bushing
X - 4	Shaft Bearing
X - 5	Blade Shaft
X - 6	Blade Shaft Key
X - 7	Blade Shaft Spacer
X - 8	Taper Lock Bushing
X - 9	Pulley
X - 10	Engine
X - 11	Engine Shaft Key
X - 12	Drive Belt
X - 13	Belt Cover
X - 14	Blade Pointer Arm
X - 15	Pointer
X - 16	Blade Clamp
X - 17	Blade Shaft Nut

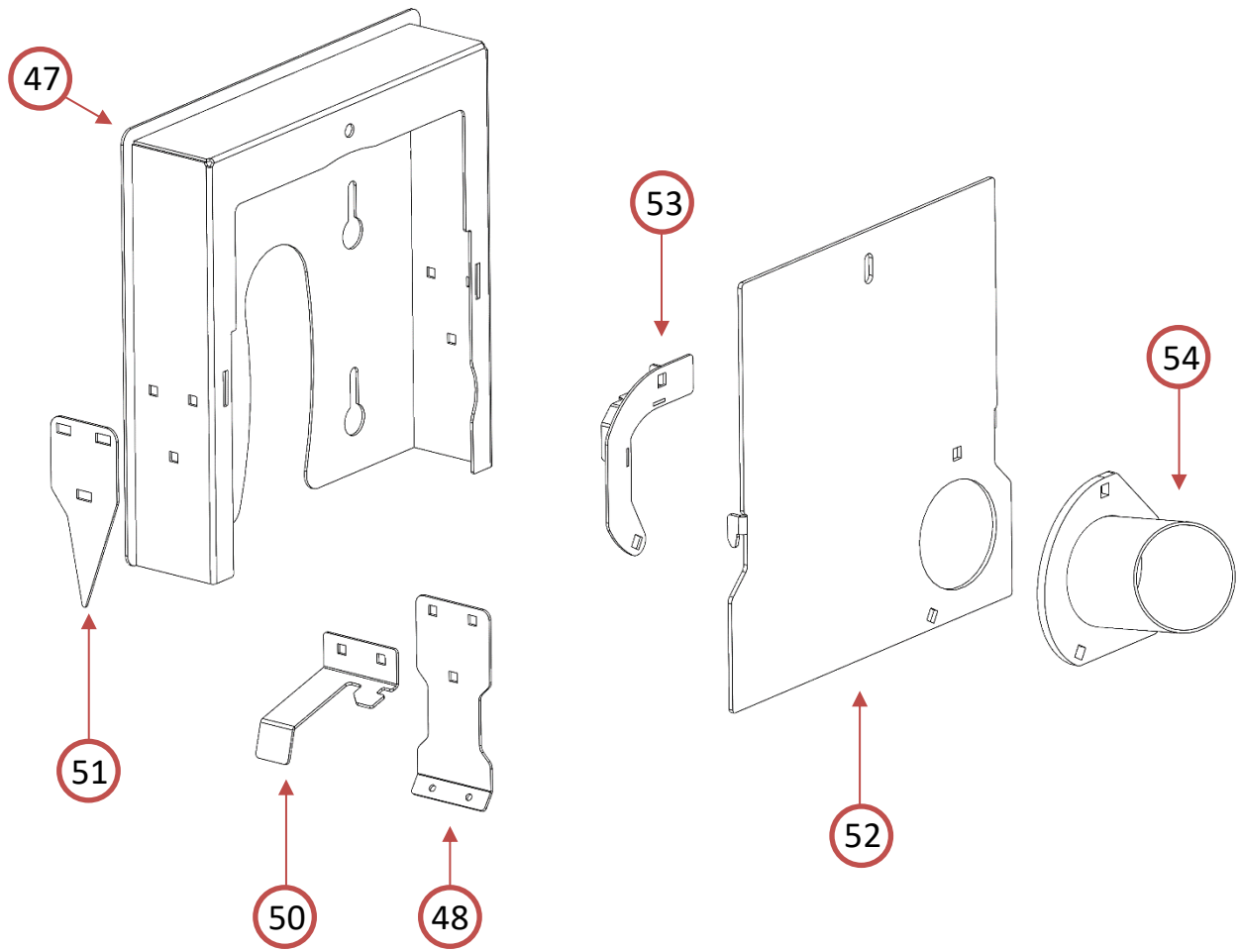




Part #	Description
X – 22	Handle Mount
X – 23	Wheel
X – 24	Lift/Lower Lock
X – 25	Wrench Holder
X – 26	Shaft Wrench
X – 27	Nut Wrench
X – 28	Aluminum Spacer
X – 29	Depth Cable Retainer
X – 30	Depth Cable
X – 31	Lift/Lower Handle
X – 32	Propane Tank Holder
X – 33	Propane Tank Strap



Part #	Description
X – 38	Lifting Mechanism Upright/Front Wheel Mount
X – 39	Lifting Mechanism Crossmember
X – 40	Handle
X – 41	Grip
X – 42	Lifting Mechanism Connecting Plate
X – 43	Blade Holder
X – 44	Lifting Mechanism Assembly (X-38, 39, 40, 41, 42, 43)



Part #	Description
X - 47	8" Dust Box Main
X - 48	Dust Skirt Mount
X - 49	Dust Skirt (Not Pictured)
X - 50	Internal Dust Deflector
X - 51	Rear Blade Pointer
X - 52	8" Dust Box Door
X - 53	Dust Box Door Deflector
X - 54	Dust Port
X - 55	10" Dust Box (Not Pictured)
X - 56	10" Dust Box Door (Not Pictured)
X - 57	10" Dust Box 3" Dust Port (Not Pictured)
X - 58	8" Dust Box Assembly
X - 59	10" Dust Box Assembly