

GorillaConcreteTools

GS-100

**Early Entry
Joint Saw**

Product Manual



GS-100 Quick Start Guide

WARNING: This saw is intended for outdoor use only: Remember to always wear the proper PPE during saw operation.

Oil type & capacity: 0.63qt 10W-30

These instructions are only intended to show you the set-up of our saw. Do not use until you have been trained how to properly operate this walk-behind concrete saw.

1. Attach the upper control handle to the saw using the provided hardware (Fig.1).
2. Attach lower lift handle using the provided hardware (Fig.2). Rotate the handle clockwise towards the front of the unit, this allows the blade to have maximum ground clearance.
3. Attach the pointer arm using the provided hardware (Fig.3).
4. Install blade, do not overtighten the blade nut as it will tighten during operation.
5. Before starting the engine, ensure the oil level is at the proper level. Position the engine so that it is not angled up or down while checking engine oil level.

For more information, please scan the QR code on the handle of the saw!

During Operation: Do not run the saw off the concrete slab during operation unless the unit is supported as this could potentially damage the concrete, drive belt, blade shaft pulley, or blade shaft bearing. We are not responsible for any damage caused by improper use of the equipment.

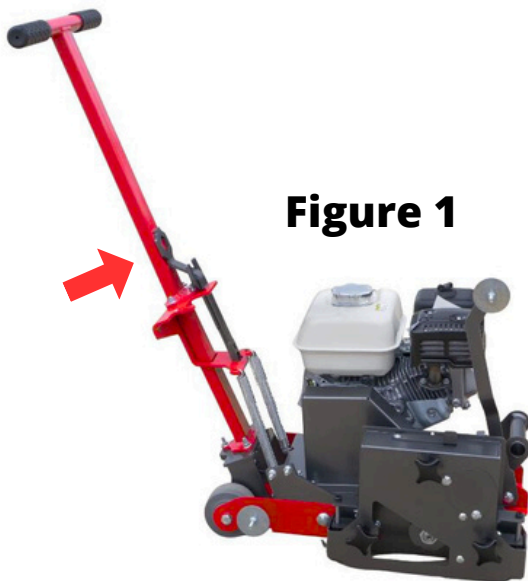


Figure 1

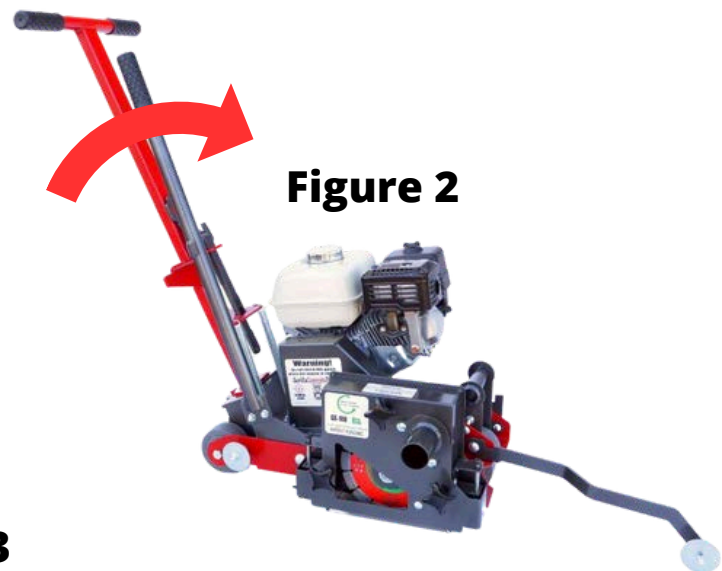


Figure 2

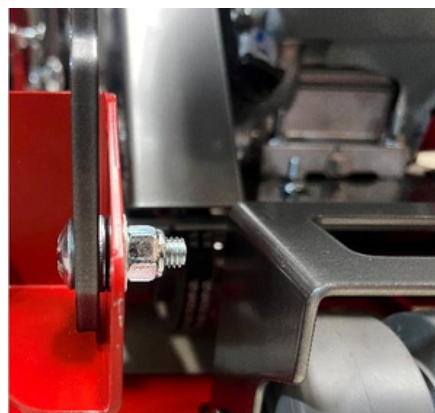
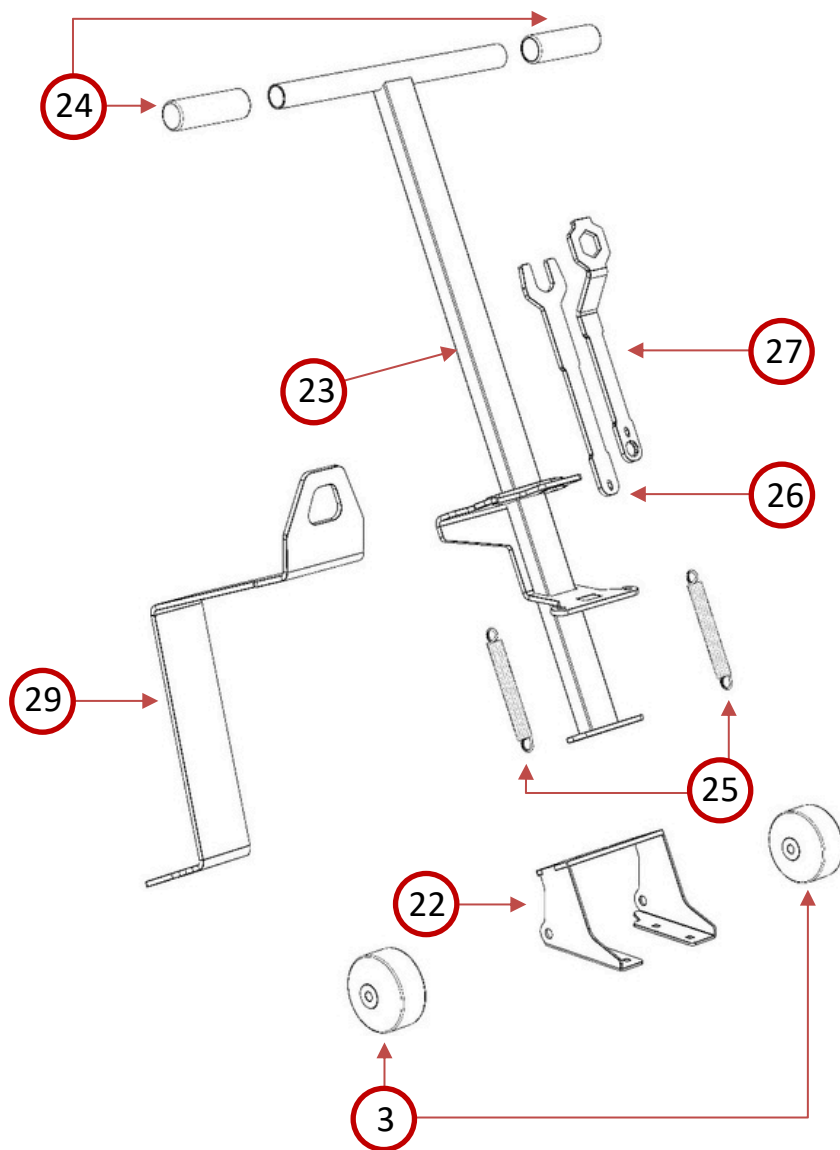


Figure 3

This exploded view diagram illustrates the assembly of a generator. The components are numbered 1 through 28. The main parts include:

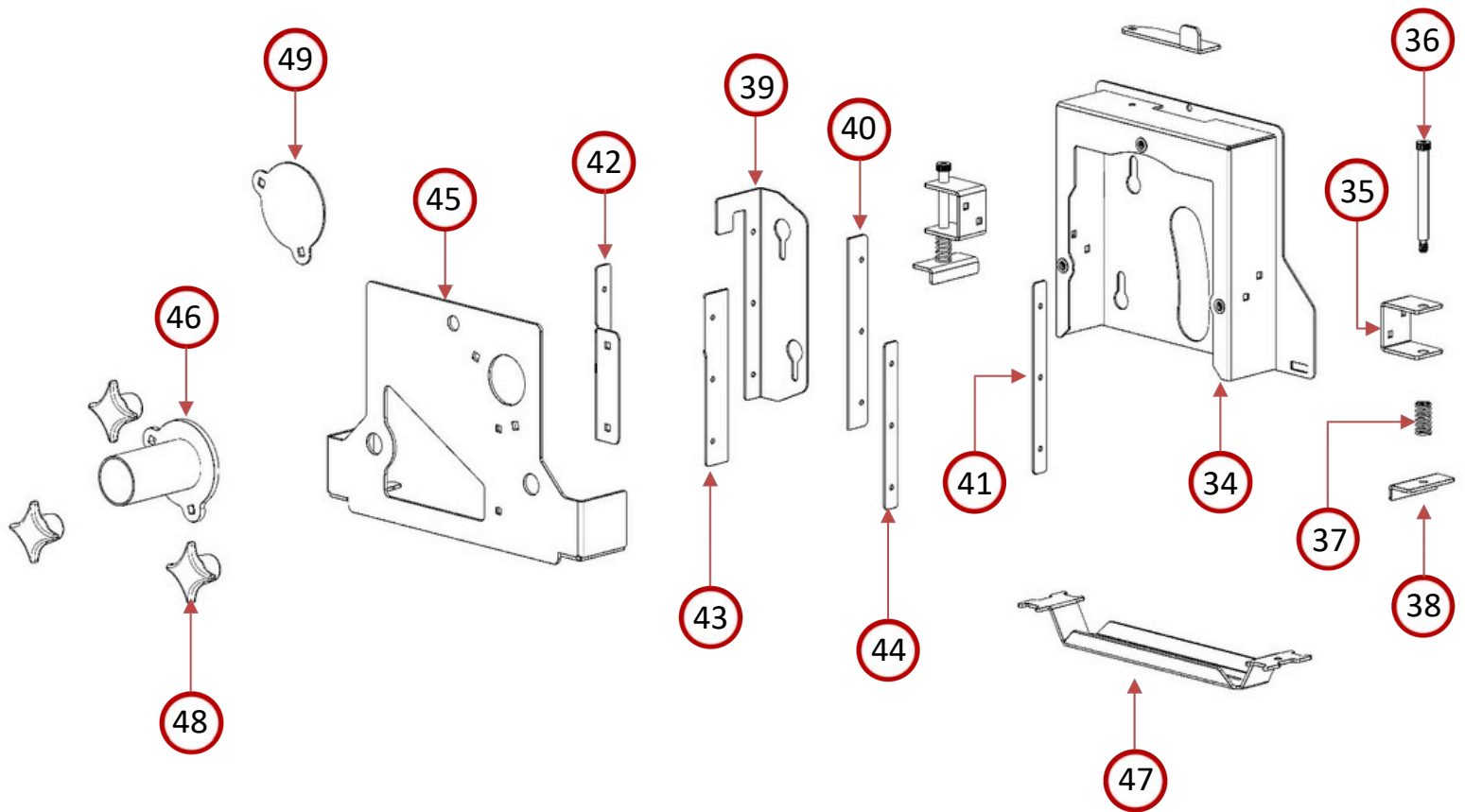
- 1**: Main generator housing/frame.
- 2**: Vertical support bracket.
- 3**: Small pulley wheel.
- 4**: Long vertical mounting bracket.
- 5**: Small bolt/screw.
- 6**: Small pulley wheel.
- 7**: Long horizontal shaft.
- 8**: Small pin/washer.
- 9**: Small pin/washer.
- 10**: Curved mounting bracket.
- 11**: Generator engine unit.
- 12**: Small pulley wheel.
- 13**: Triangular mounting plate.
- 14**: Long vertical mounting bracket.
- 15**: Small pin/washer.
- 16**: Small pin/washer.
- 17**: Curved mounting bracket.
- 18**: Small pulley wheel.
- 21**: Small pin/washer.
- 28**: Small pulley wheel.

GS100 – 11	Engine
GS100 – 12	Drive Pulley
GS100 – 13	Belt Cover
GS100 – 14	Lift/Lower Handle
GS100 – 15	Depth Stop Backer
GS100 – 16	Depth Stop
GS100 – 17	Pointer Arm
GS100 – 18	Blade Clamp
GS100 – 19	Blade Shaft Nut
GS100 – 20	Engine Shaft Key
GS100 – 21	Hard-Stop Backer Plate



Part Number	Description
GS100- 22	Handle Mount
GS100- 23	Saw Handle
GS100- 24	Handle Grip
GS100- 25	Motor Plate Tension Spring
GS100- 26	Blade Shaft Wrench
GS100- 27	Blade Nut Wrench
GS100- 28	Lifting Arm
GS100- 29	Pointer Washer

GS-300 Early Entry Dust Box



Part Number	Description
GS100-34.2	Dust Box
GS100-35	Tensioner Slide Mount
GS100-36	Tensioner Slide
GS100-37	Skid Plate Tensioning Spring
GS100-38	Skid Plate Tensioner
GS100-39	Internal Baffle Mount
GS100-40	Internal Rubber Baffle (Sold as set with GS100-42)
GS100-41	Internal Baffle Clamp
GS100-42	Door Baffle Mount
GS100-43	Door Rubber Baffle (Sold as set with GS100-40)
GS100-44	Door Baffle Clamp
GS100-45	Dust Box Door
GS100-46	Dust Port
GS100-47	Skid Plate
GS100-48	4-arm knob
GS100-49	Dust Port Block Off Plate
GS100-50	Complete Dust Box Assembly
GS100-51	Dust Box Door without window

User Manual

Warnings!

This Saw is made for outdoor use only

*Follow the engine manufactures manual prior to saw set-up.
These instructions are only intended to show you the set-up of our saw.
Do not use until you have been trained on how to properly operate a walk behind concrete saw.*



Stay clear of others while in operation.
Debris can fly from blade area.
Eye and face protection required.



Respirator required.
Operate in well ventilated area.



Ear protection required.

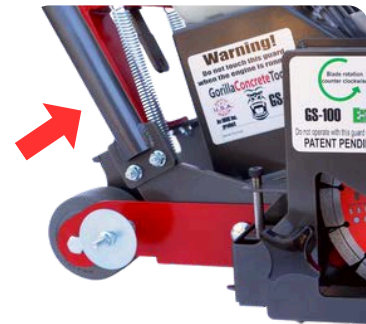
Initial Set Up

1. Using the hardware provided install the upper handle to the lower handle using a 1/2" wrench.
2. Attach the lift/lower handle with the provided hardware and rotate clockwise as show in Figure 2.
3. Add gasoline and **0.63 Qt 10w-30**. With the engine level, check the oil fill line for proper oil level. Add oil as needed.

Figure 1



Figure 2



Blade Removal and Installation

Ensure engine switch is in the off position

1. Remove the three 4-arm knobs on the outside of the dust box and pull the door away from the unit. (Fig. 3)
2. Loosen the nut on the blade shaft using the wrenches provided (Fig. 4). The flat wrench is used on the shaft between the dust box and frame or access hole in top of Dust box.
3. Place one washer on either side of the blade (Fig. 5). Ensure the blade is oriented for a counter-clockwise rotation.
4. Install all hardware and completely tighten.

Figure 3

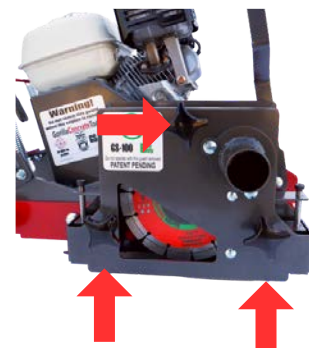


Figure 4

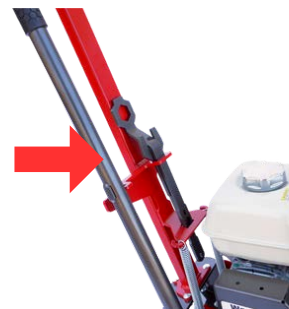


Figure 5



Fluids

Engine oil: 10w-30

Oil Capacity: .63 Quarts

- Check oil level to ensure proper fill height. Position engine so that it's level before checking oil.

Fuel: Regular Unleaded

Fuel Capacity: 0.8 Gallons

Blade Pointer Alignment

Install the blade before aligning pointers

1. Lower the pointer arm
 2. Place a straight edge against the blade spanning from the rear pointer to the front pointer
 3. Using a 1/2" wrench, loosen the pointer shown in Fig. 6 and align them with your straight edge.
 4. Tighten all loose hardware.
-

Quick Blade Depth (Fig. 7)

The blade depth gauge features reference points with 1/2" depth increments up to 2" depth.

1. Lift depth stop in channel.
2. Slide left or right, and drop into alignment grooves for desired depth.

Figure 6

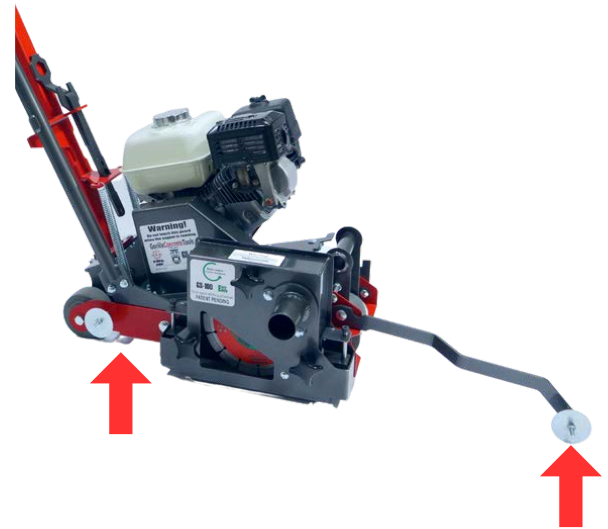
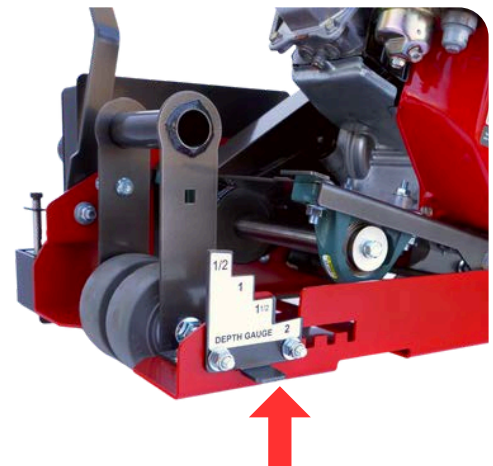


Figure 7





About Us

Easy to Operate | Hard to Break | Simple to Fix

When we started Gorilla Concrete Tools we had two goals in mind: to get people off their hands and knees and to reduce the risks associated with concrete dust exposure. And we have continued building equipment following those two principles making most of our saws silica dust compliant while also easy to operate, hard to break, and simple to fix.

We manufacture all of our equipment right here in the United States of America within our own facility in Columbia Station, Ohio, to ensure that those principles are followed and to guarantee we are making a quality product for our consumers.

Made in America. Columbia Station, Ohio 



Contact Us

sales@obhcinc.com

+1 (440)-236-5112

www.gorillaconcretetools.com