

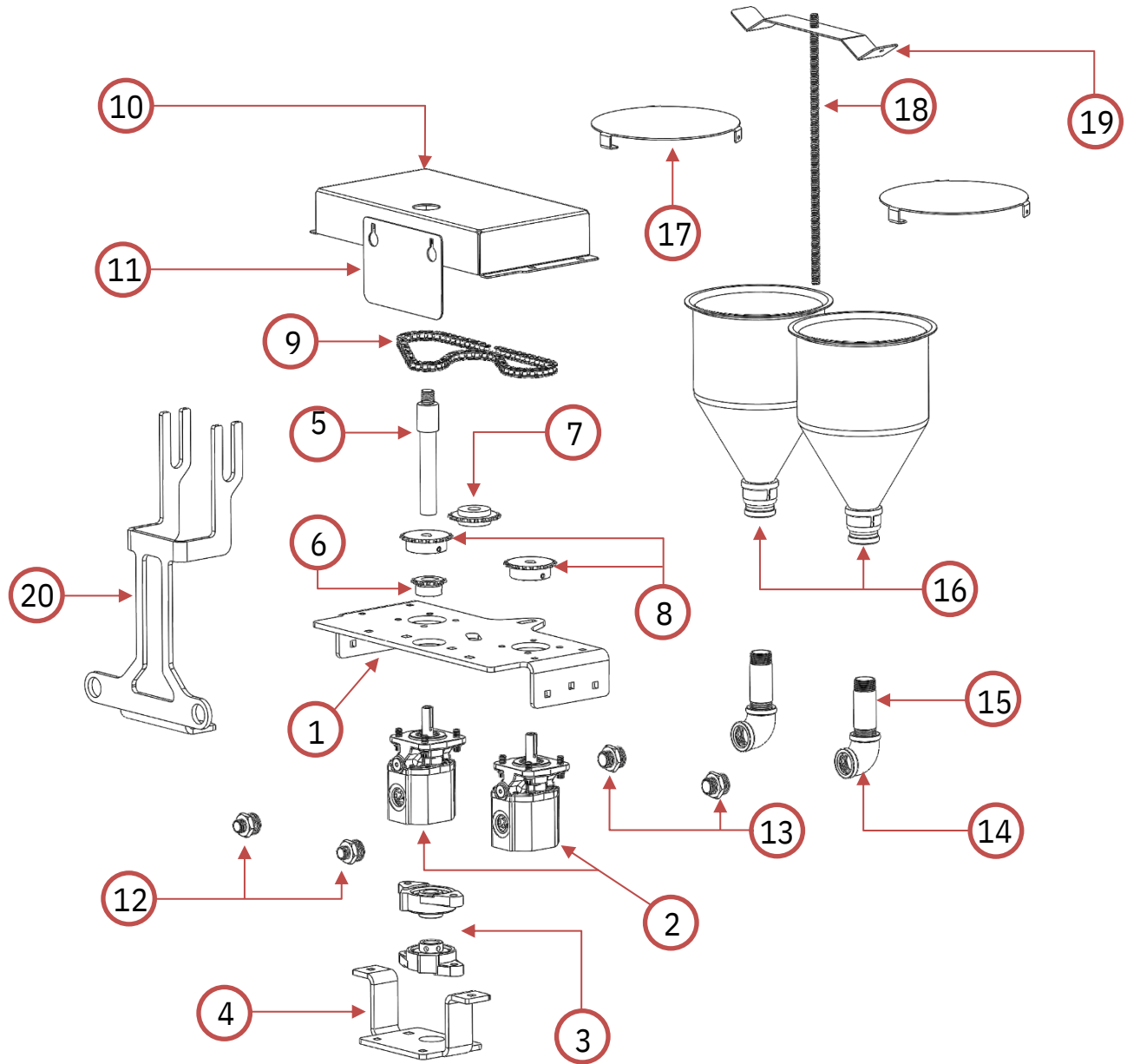
GorillaConcreteTools

GP-3 Mini-Pro Dual Component Pump

Product Manual

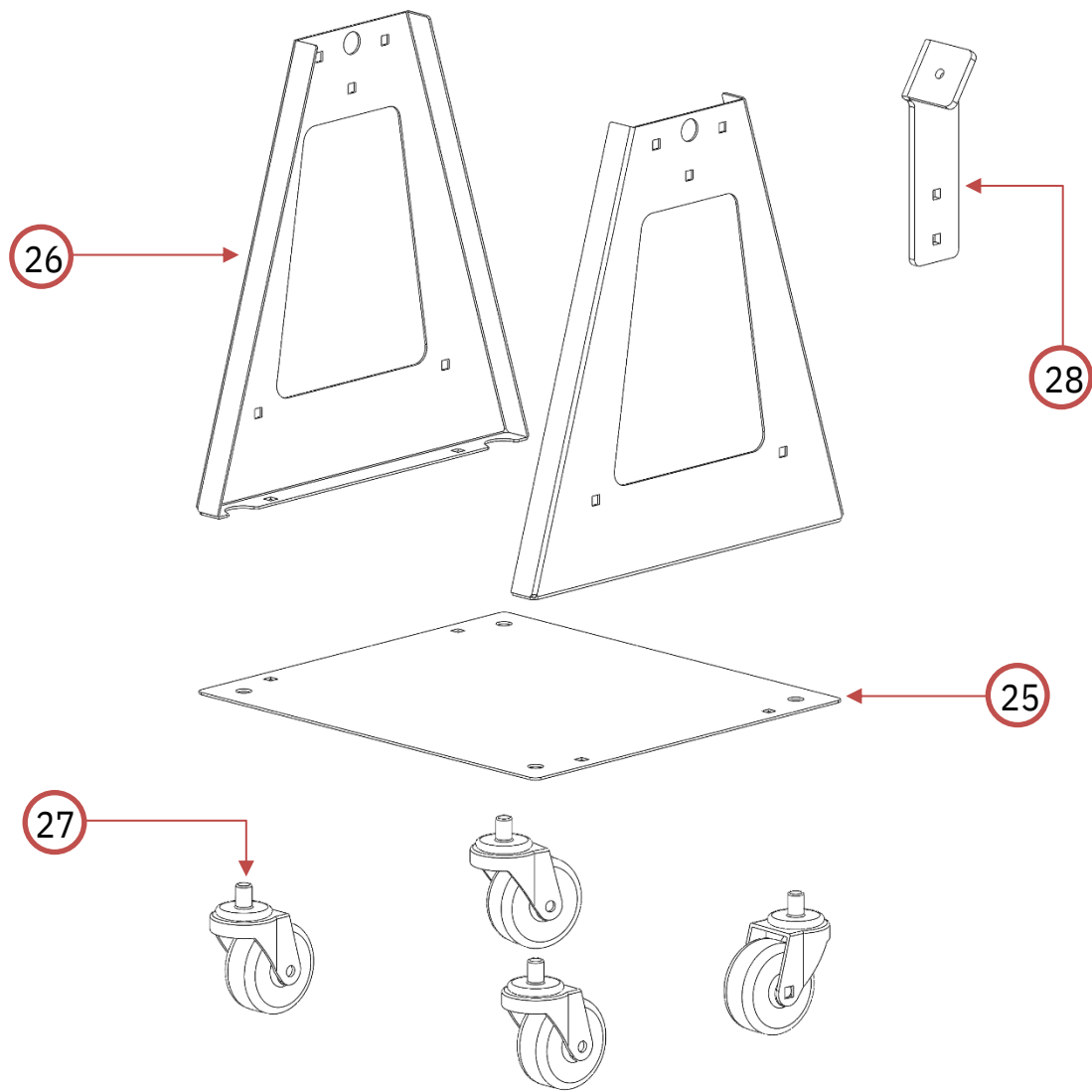


Parts Diagram

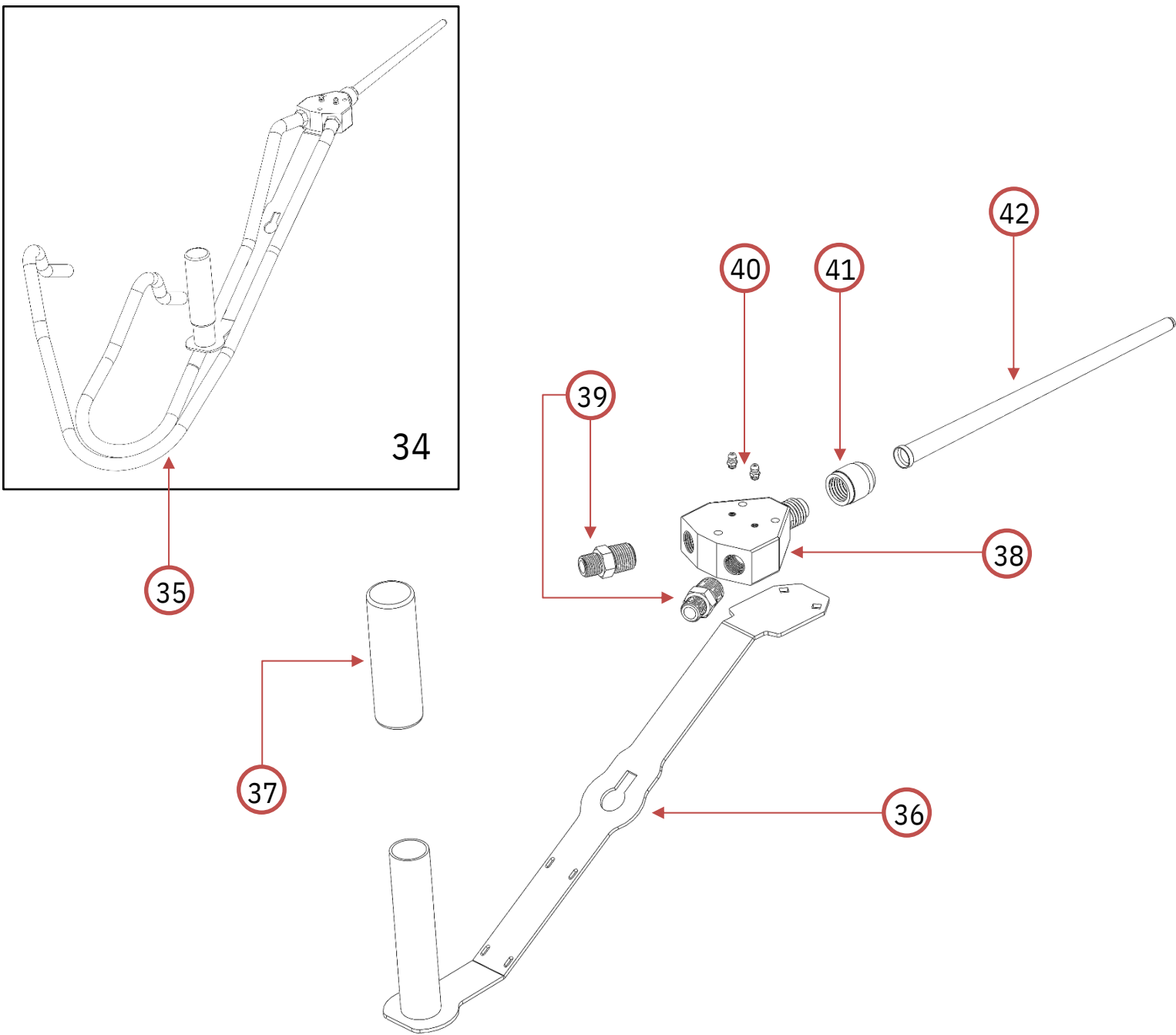


Part Number	Description
MP - 1	Pump Mounting Plate
MP - 2	Gear Pump (Sold Individually)
MP - 3	Shaft Bearing (Sold Individually)
MP - 4	Bearing Mount
MP - 5	Drive Shaft
MP - 6	Drive Sprocket
MP - 7	Idler Sprocket
MP - 8	Gear Pump Sprockets
MP - 9	Drive Chain
MP - 10	Chain Cover
MP - 11	Bearings Cover
MP - 12	Pump Outlet Fittings

Part Number	Description
MP - 13	Pump Inlet Fittings
MP - 14	Elbow Fitting
MP - 15	Hopper Threaded pipe
MP - 16	Stainless Steel Material Hopper
MP - 17	Hopper Lid
MP - 18	Lid Holder Mounting Rod
MP - 19	Hopper Lid Holder
MP - 20	Drill Mixer Mount
MP - 21	Idler Sprocket Spacer (Not Pictured)
MP - 22	Hopper Debris Filters (Not Pictured)



Part Number	Description
MP – 25	Pump Support Base Plate
MP – 26	Pump Supports
MP – 27	Swivel Caster
MP – 28	Wand Mount



Part Number	Description
MP - 34	Complete Wand Assembly
MP - 35	Braided Dispensing Hose
MP - 36	Dispensing Wand
MP - 37	Grip
MP - 38	Coarse Thread Manifold
MP - 39	Manifold Fittings
MP - 40	Grease Fittings
MP - 41	Manifold Nut
MP - 42	Static Mixing Tip
MP - 43	Night Cap (Not Pictured)

GP-2 Assembly & Cleaning

Warnings!

These instructions are only intended to show you the set-up of our pump. Do not use until you have been trained on how to properly operate a polyurea pump.

- Wear appropriate safety gear when operating this pump
- Always use the same tanks with similar chemicals. Mixing materials will cause curing inside of the tanks, pumps, and hoses
- Store pump properly according to guidelines

Assembly Supplies

Items Required for assembly: 7/16" Wrench, 1/2" Wrench, 11/16" Wrench, 3/4" Socket, 7/8" Wrench, and Cordless Impact Driver

Package Contents (2 Boxes)

- Main pump assembly (qty: 1)
- Pump uprights (qty: 2)
- Pump base (qty: 1)
- Drill mounting bracket assembly (qty: 1)
- Wand mount assembly (qty: 1)
- Wand assembly (qty: 1)
- Stainless steel material hoppers (qty: 2)
- Hopper particle screens (qty: 2)
- Hopper lids (qty: 2)
- Hopper lid holder assembly (qty: 1)
- 6 ft. Braided hoses (qty: 2)
- Zip ties (qty: 4)
- Static mixer (qty: 1)
- 3" Swivel casters (qty: 4)
- 5/16-18 x 3/4" Carriage bolts (qty: 8)
- 5/16-18 Serrated flange nuts (qty: 8)
- M14 Bolts w/washers (qty: 2)
- 1/2" Impact adapter (qty: 1)
- 15/16" Socket (qty: 1)
- 1/4" Grease ports (qty: 2)
- Drill mixer (qty: 1) **(Optional)**

Assembly

Figure 1



Figure 2



Step 1:

Begin by removing all contents from packages: The main pump assembly has been assembled and tensioned for easy assembly.

Step 2:

Secure the pump base to the pump uprights with the supplied hardware, as shown in Fig. 1. This is also a good time to attach the 3" casters. Make sure to secure the casters to the base completely.

Step 3:

Attach the assembled base and uprights to the main pump assembly with the supplied hardware, as shown in Fig. 2. Make sure all hardware is completely secured.

Figure 3



Figure 4



Step 4:

With the base assembly secured to the main pump assembly, rotate the assembly to rest on the wheels. Attach the drill mounting bracket and the wand mounting bracket with the hardware attached, as shown in Figures 3 & 5.

Step 5:

Attach the material hoppers, as shown in Fig. 4. Note which side will be your Part A & Part B sides of the machine. Insert hopper particle screens. Place your hopper lids onto the hoppers and attach the hopper lid holder assembly, as shown in Fig. 4.

Figure 5



Figure 6



Step 6:

Route both braided hoses through the drill mounting bracket and attach them to the pump fittings using the open end of the 11/16" wrench, as shown in Fig. 5. Next, secure the opposite ends to the fittings on the pump manifold using the same wrench.

Step 7:

Once the hose fittings have been tightened, secure the hose to the wand using the supplied zip ties, as shown in Fig. 6. Do not over-tighten the zip ties, as this could damage the braided hose. Next, place the wand onto the wand mount, as shown in Fig. 7.

Assembly Pt. 2

Figure 7



Figure 8



Figure 9



Step 8:

Remove the 1/4-28 Hex head bolts from the wand manifold and install the grease ports, as shown in Fig. 8.

Step 9:

Check the threading on your drill mounting bolt holes to confirm the M14 bolts are the proper hardware for your unit if you did not purchase the optional drill mixer from us. Secure the 1/2" impact adapter and 15/16" socket to the optional drill mixer. Attach the drill mixer to the drill mounting bracket using the supplied M14 bolts and washers, as shown in Fig. 9. If the drill mixer is not aligned with the drive nut, you can adjust the mount by loosening the drill mount mounting bolts and sliding the bracket in or out.

Step 10:

Double check all bolts and fittings have been securely fastened on the machine before using.

Pump Set Up

Filling Pump:

1. Read the manufacturer's safety data sheet and instructions for the material you will be using.
2. Mix components according to the manufacturer's instructions.
3. After mixing components, pour Part A into Part A tank, and then, pour Part B into Part B tank. (Fig. 1)

Never cross contaminant tanks.

Preparing for Use:

1. Clean off the manifold with the static mixing tip removed. (Fig. 2)
2. Dispense material into a waste container to check for a smooth, air-free flow of both components. Make sure that there are two smooth, consistent streams.
 - a. *If the streams of material are not consistent, check for blockages and clean the manifold accordingly and repeat the previous steps.*
3. Attach a new static mixing tip onto the manifold.
 - a. *If dispensing a cure sample, follow long-term interruptions directions below.*

Work Interruptions:

1. **Short Term** (5 or so minutes): periodically trigger applicator wand to dispense material into a waste container every 30-45 seconds to ensure the material in static mixing tip does not set.
2. **Long Term** (lunch break or cure sample): remove static mixing tip and discard. Pump grease into fittings on the manifold. Upon returning to work, re-install a new static mixing tip.

Figure 1



Figure 2



Pump Cleaning

Materials Needed:

- 4 cups of manufacturer's recommender cleaner
- 4 cups of oil (we recommend vegetable)
- Solvent proof gloves and splash-proof goggles
- Waste buckets
- Rags or Paper towels
- Proper storage container for leftover material

Warnings

- Always clean in a well-ventilated area
- Do NOT clean the pump near open flames or welders
- Wear protective gear
- Dispose of all waste correct and according to local guidelines

Tank Cleaning:

1. Dispose of all remaining material by purging it straight through the manifold without a static mixer attached into a waste container. *Follow manufacturer's guidelines for material disposal.*
2. After emptying, pour 2 cups of cleaner into each tank.
3. Purge through the system, including the manifold to clean it out.
4. Repeat steps 2 and 3 as needed until lines are clean.
5. Verify that all cleaner has been purged from the system.
6. Wipe tanks clean with the manufacturer's recommended cleaner.

Proper Storage:

1. After cleaning, pour at least 2 cups of oil (we recommend vegetable) into each tank.
2. Purge any remaining cleaner from the system using the oil. Leave some oil in the lines, manifold, valves, and pumps for proper storage.
3. Using manifold grease fittings, pump grease into manifold until it comes out of the dispensing ports.